

SECTION 7

SURVEYOR INFORMATION

System Design

UNDERSTANDING BIRD BEHAVIOUR

SITE SURVEY

MAINTENANCE CONSIDERATIONS

DESIGN AND POSITIONING OF THE;
FLEX-TRACK

ENERGISER

CONNECTORS

QUICK TAP JUMPERS

LEAD WIRE

MATERIALS LIST

MATERIALS LIST - TEMPLATE ORDER FORM

UNDERSTANDING BIRD BEHAVIOUR

Protecting buildings and structures from perching, roosting and nesting will only be successful if undertaken with a good understanding of the natural behaviour of the particular birds causing the problem. This will require a thorough survey of the structure to be protected and its environment.

A number of key aspects of bird behaviour need to be taken into account in planning and maintaining the most effective solution for any given infestation problem:

- > Feeding
- > Nesting
- > Roosting
- > Loafing
- > Look Out Perching
- > Displacement
- > Adaptability.
- > Landing Behaviour

Only when armed with a good understanding of the way specific areas are being used by particular bird species can AVISHOCK™ be put in place to protect them effectively over an extended period. Note: The same AVISHOCK™ component parts can be used to protect all species and all levels of infestation.

The first essential of effective bird management is a detailed survey of the area to be protected and its immediate neighbourhood to identify the most important sites to the birds.

This needs to involve a systematic classification of all the parts of the building or structure for relative bird pressure. In addition to actual bird activity, pressure can be gauged by the degree of fouling, the presence of nests and the quantity of other debris.

Inspections should also assess areas currently showing relatively little evidence of activity for their likely appeal to birds displaced by the protection of more favoured locations. Catering for these eventualities as part of the initial programme will make AVISHOCK™ far more successful and long-lived.

Advice regarding understanding Bird Behaviour can be found at:
www.behaviourled.com

SITE SURVEY

The key difference between a survey where AVISHOCK™ is to be offered as a solution and a survey for other bird protection methods is that there is some additional information that needs to be ascertained:

- > Where are the birds landing?
- > Are there any perches above the areas to be protected from which droppings might be deposited onto the AVISHOCK™? To ensure ongoing effectiveness of the AVISHOCK™, these areas will need protection as well
- > What angle are the surfaces to be protected?
- > Where is the power supply for plugging in the energiser? Is it in a suitable location or will new socket(s) need to be supplied (by the customer)?
- > Where will the warning signs be installed?
- > Who might touch AVISHOCK™ once it is installed? Is the area open to or readily accessible by the public?
- > If AVISHOCK™ is to be installed on window ledges or balcony handrails, what height above floor level are these locations?
- > Are there any overhead power lines within 15m horizontally of the parts of the building to be protected? If so, note the exact positions and voltage of the power lines
- > Are there any explosive gases in the area?

MAINTENANCE CONSIDERATIONS

A quarterly service contract is recommended. When being maintained, the system should be checked for voltage continuity, Energiser condition, loose connections, debris and damage. When designing the solution ensure that maintenance requirements are considered.

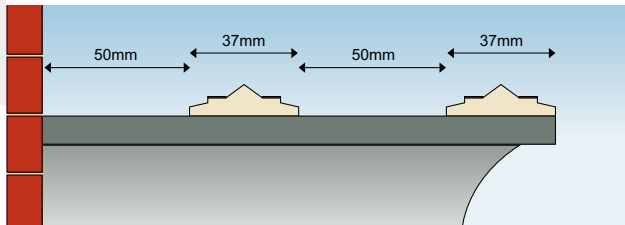
DESIGN AND POSITIONING OF THE FLEX-TRACK

One-sided ledges: Pigeons/Gulls

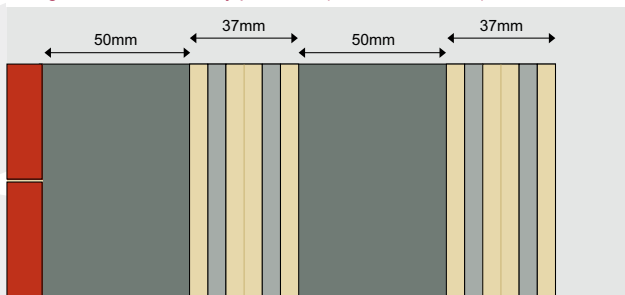
SPECIFICATION

Ledge Type	One-sided ledges
Bird Species	Pigeons/Gulls
Heavy Pressure	1 row on ledge edge and subsequent rows at 50mm spacing
Light Pressure	1 row on ledge edge

ONE-SIDED LEDGES:
 Pigeons/Gulls in heavy pressure



ONE-SIDED LEDGES:
 Pigeons/Gulls in heavy pressure (View from above)

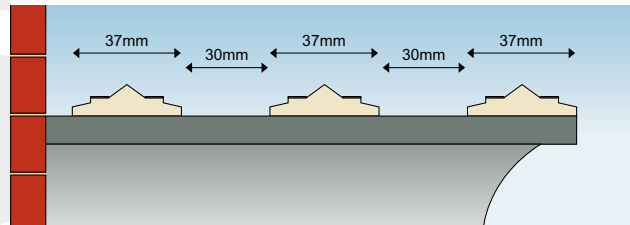


One-sided ledges: Starlings/Sparrows

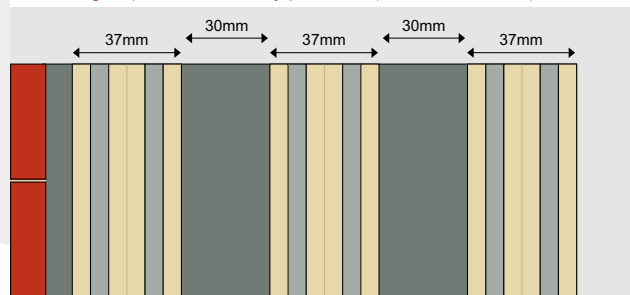
SPECIFICATION

Ledge Type	One-sided ledges
Bird Species	Starlings/Sparrows
Heavy Pressure	1 row on ledge edge and subsequent rows at 30mm spacing
Light Pressure	1 row on ledge edge

ONE-SIDED LEDGES:
 Starlings/Sparrows in heavy pressure



ONE-SIDED LEDGES:
 Starlings/Sparrows in heavy pressure (View from above)

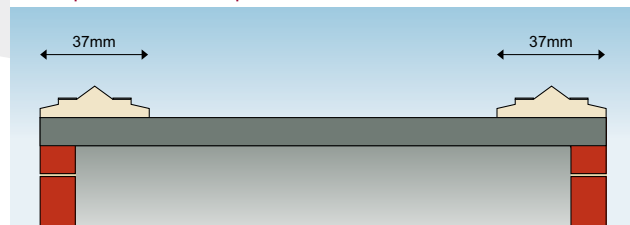


Parapets/Open ledges: All Species

SPECIFICATION

Ledge Type	Parapets/Open ledges
Bird Species	All
Heavy Pressure	1 row on outer and inner edges and ends and 1 or more additional rows running down the centre
Medium Pressure	1 row on outer and inner edges and ends
Light Pressure	1 row on ledge edge

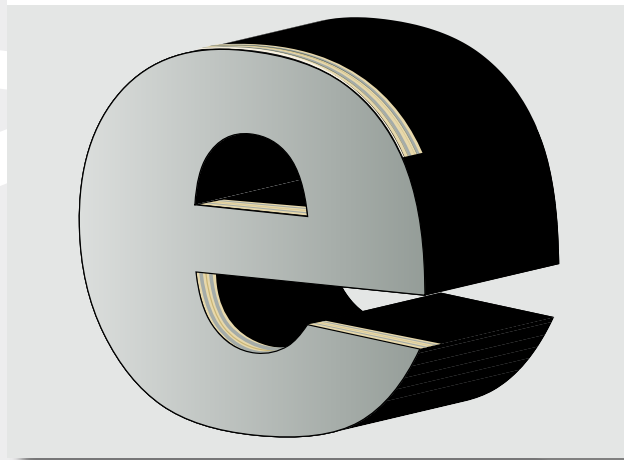
PARAPETS/OPEN LEDGES:
 All Species in medium pressure



Signs: Pigeons/Gulls

SPECIFICATION	
Ledge Type	Signs
Bird Species	Pigeons/Gulls
Heavy Pressure	1 row on sign edge then subsequent rows at 50mm spacing
Light Pressure	1 row on sign edge

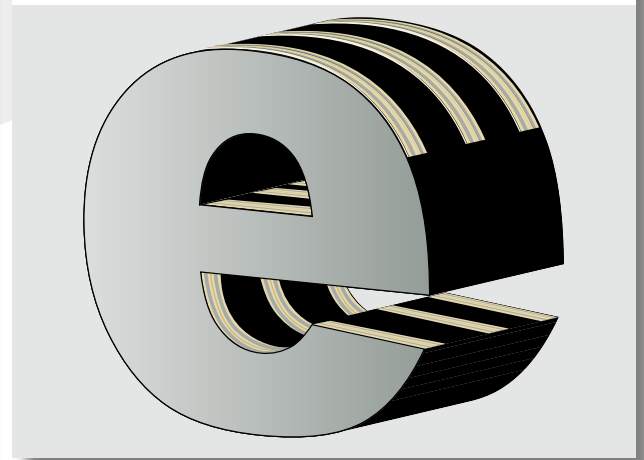
SIGNS:
Pigeons / Gulls



Signs: Starlings/Sparrows

SPECIFICATION	
Ledge Type	Signs
Bird Species	Starlings/Sparrows
Heavy Pressure	1 row on sign edge then subsequent rows at 30mm spacing
Light Pressure	1 row on sign edge

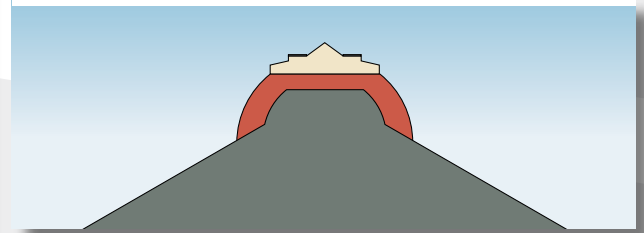
SIGNS:
Starlings / Sparrows



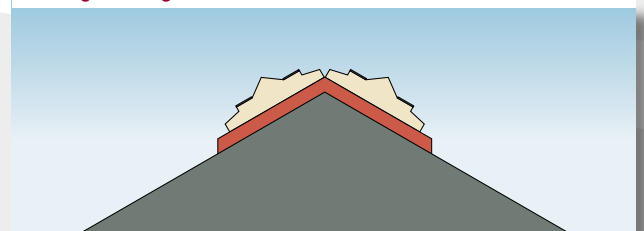
Roofs and Roof Ridges : All Species

SPECIFICATION	
Ledge Type	Roofs and Roof Ridges
Bird Species	All
Round Ridges	1 row on along the centre of the Ridge
Triangular Ridges	1 row either side of the Ridge touching each other
Gable Ends	Follow the guidelines that apply to one-sided ledges

ROOFS AND RIDGES:
Round Ridges



ROOFS AND RIDGES:
Triangular Ridges



DESIGN AND POSITIONING OF THE ENERGISER

Which Energiser?

$$\text{'Run of Flex-Track'} = \text{Total metres of Flex-Track} + \frac{\text{Total metres of Lead Wire}}{10}$$

ENERGISER TYPE	AMOUNT
Small Energiser	Up to 150m run of Flex-Track
Large Energiser	150m to 300m run of Flex-Track

Number of Energisers

Only one Energiser should be used per 'Run of Flex-Track.'

Locating the Energiser

- > Encase, or locate the Energiser where it cannot be easily seen or disturbed.
- > The Energiser must however be easily accessible to the installer and other parties should the system need to be isolated (unplugged).
- > If the Power supply is situated inside the building, ensure that the Lead Wire is channelled from the Flex-Track outside to the Energiser inside through a watertight hole.
- > If the Power supply is situated on the outside of the building, ensure that it is encased in a Water-proof casing. Do not just use waterproof sockets as these are not large enough to fit the transformer/plug.

DESIGN AND POSITIONING OF THE CONNECTORS

Straight/Corner Connectors are required at every point where the Flex-Track turns a corner and also for joining Flex-Tracks together. Straight/Corner Connectors can also be used to connect neighbouring Flex-Tracks together using Lead Wire in the same way Quick Tap Jumpers do.

DESIGN AND POSITIONING OF THE QUICK TAP JUMPERS

Quick Tap Jumpers are used to join the Energiser to the Flex-Track or Flex-Track to Flex-Track via the Lead Wire. Position the Quick Tap Jumpers so that the Lead Wire length is kept to a minimum.

DESIGN AND POSITIONING OF THE LEAD WIRE

For a neat and discreet solution, design the installation so that the Lead Wire runs along the natural contours of the building or alongside other external wires and cables. Choose the suitable colour for the building.

MATERIALS LIST

CODE	PRODUCT	QTY / TYPE	PACKS	ADVICE
SHK001	Flex-Track Colour	Roll	Stone / Black / Brick Red	If colour is not an issue, use Stone
SHK002	Flex-Track Qty		1 roll = 15m	Don't forget to multiply the total length of ledge by number of rows of Track
SHK003				
ADH001 ADH006	Avisil / Avifix Adhesive	Tube or Carton	310ml / 290ml tube 1 carton = 15 tubes	1 tube of Avisil per 10m of Track 1 tube of Avifix per 75 Straight/Corner Connectors
SHK040	Energiser Type	Small or Large		Small = up to 150m run of Track Large = 150m-300m run of Track
SHK120	Energiser Qty	Unit	Each	1 Energiser required per run of Track
SHK021	Straight/Corner Connectors	Pack	25 per pack	Consider the number of: rolls, joins, ledges and corners?
SHK022	Quick Tap Jumpers	Pack	30 per pack	Corner/Straight Connectors can be used to connect Track to Track or Track to Energiser
SHK011 SHK012	Lead Wire Colour / Qty	Reel	1 reel = 15m	Choose suitable colour for building Calculate the distance from Energiser to Track plus the amount needed to connect Track to Track
SHK031	Wire Guides	Pack	100 per pack	3 Wire Guides required per metre of Lead Wire
SHK023	Female Connectors	Pack	50 per pack	2 Connectors are required to attach Lead Wire to each Track
SHK024	Ring Terminal	Pack	10 per pack	2 Terminals are required per Energiser
SHK032	Warning Plates	Pack	25 per pack	Required every 5m or where access is possible
SHK033	Window Warning Stickers	Roll	100 per roll	Required for every window where the window ledge is protected with Track
SHK030	Foams Pads	Pack	10 per pack	To allow water-flow under track 3 pads per metre where required
SHK028	Lock Down Kit	Pack	50 per pack	Used where gluing is not possible 2 per metre where required

Tools

CODE	PRODUCT	QTY / TYPE	PACKS	ADVICE
SHK051	Voltage Tester	Unit	Each	Expect to see a reading between 5.0KV and 9.0KV on live Track
SHK052	Connector Crimp Tool	Unit	Each	Use 1.5-2.5mm setting
SHK053	Wire Stripper	Unit	Each	Use 2.6mm setting Strip 10mm from end of Lead Wire
NET136	Net/Flex-Track Shears	Unit	Each	Cuts Track and Braid-Strips
ADH015	Adhesive Applicator Gun	Unit	Each	For Avisil / Avifix Adhesive
ADH027	Adhesive Tube Cutter	Unit	Each	Cuts Cap and Nozzle of Avisil / Avifix Adhesive

MATERIALS LIST - TEMPLATE ORDER FORM

Download this form at www.avishock.net

CODE	PRODUCT	QTY / TYPE	PACKS	QUANTITY
SHK001	Flex-Track Colour	Roll	Stone / Black / Brick Red	
SHK002	Flex-Track Qty		1 roll = 15m	
SHK003				
ADH001 ADH006	Avisil / Avifix Adhesive	Tube or Carton	310ml / 290ml tube 1 carton = 15 tubes	
SHK040	Energiser Type	Small or Large		
SHK120	Energiser Qty	Unit	Each	
SHK021	Straight/Corner Connectors	Pack	25 per pack	
SHK022	Quick Tap Jumpers	Pack	30 per pack	
SHK011 SHK012	Lead Wire Colour / Qty	Reel	1 reel = 15m	
SHK031	Wire Guides	Pack	100 per pack	
SHK023	Female Connectors	Pack	50 per pack	
SHK024	Ring Terminal	Pack	10 per pack	
SHK032	Warning Plates	Pack	25 per pack	
SHK033	Window Warning Stickers	Roll	100 per roll	
SHK030	Foams Pads	Pack	10 per pack	
SHK028	Lock Down Kit	Pack	50 per pack	

Tools

CODE	PRODUCT	QTY / TYPE	PACKS	QUANTITY
SHK051	Voltage Tester	Unit	Each	
SHK052	Connector Crimp Tool	Unit	Each	
SHK053	Wire Stripper	Unit	Each	
NET136	Net/Flex-Track Shears	Unit	Each	
ADH015	Adhesive Applicator Gun	Unit	Each	
ADH027	Adhesive Tube Cutter	Unit	Each	